

SC-PRO

SC-PRO - styrene-free vinyl ester spinning capsules

SC-PRO



Approvals and test reports



Product description

1. General Applications

- For medium to heavy loads
- European approval option 7, for use in uncracked concrete
- Base materials: concrete, stone, solid brick and sand-lime materials
- Excellent performance in rotary hammer drilled holes
- Anchor may be installed in dry or wet concrete
- Suitable for use in unventilated areas, odourless
- Suitable for fixing threaded rods, steel constructions, columns, beams, consoles, ladders, gates, facades, window elements, diamond drilling machines etc.

2. Benefits

- Usable in a wide range of weather conditions, not suitable for use in water filled holes
- Long shelf time: 18 months
- Amount of mortar is exactly fitted to holesize
- Expansion free fixing, small spacing and small edge distance possible
- Quick curing time, even in cold temperatures
- Two approved temperature ranges: 24/40°C and 50/80°C

3. Properties

- Available in sizes M8, M10, M12, M16, M20, M24 and M30
- Zinc plated and hot dipped galvanised rods for use in dry internal conditions
- Stainless steel rods for use in external atmospheric exposure or exposure in permanently damp internal conditions
- High corrosion resistant rods for use in permanently damp internal conditions or in other particular aggressive conditions
- Storage temperature 5°-25°C



SC-PRO – styrenefree vinylester spinning capsules

Type	Art. Nr.			d ₀ [mm]	h _{nom} [mm]	M
SC-PRO M8	31120	10	500	10	80	M8
SC-PRO M10	31130	10	500	12	90	M10
SC-PRO M12	31140	10	200	14	110	M12
SC-PRO M16	31150	10	200	18	125	M16
SC-PRO M20	31160	10	150	22	170	M20
SC-PRO M24	31170	10	100	26	210	M24
SC-PRO M30	31176	5	50	32	280	M30

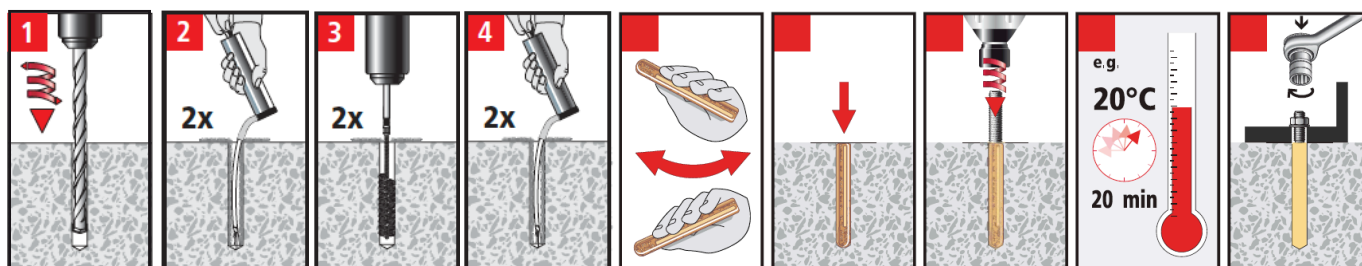
Setting time

Temp.	SET dry	SET wet
≥ -5° C	5 h	10 h
≥ +5° C	60 min	120 min
≥ +20° C	20 min	40 min
≥ +30° C	10 min	20 min



Allowable loads (8.8 steel , C20/25)

	d ₀ [mm]	h _e [mm]	range 24°/40° N _{all} [kN]	range 50°/80° N _{all} [kN]	8.8 steel V _{all} [kN]
M8	10	80	11,5	9,6	8,6
M10	12	90	16,2	13,5	13,1
M12	14	110	23,7	19,7	19,4
M16	18	125	33,6	29,9	36,0
M20	22	170	53,3	48,3	56,0
M24	26	210	73,2	71,6	80,6
M30	32	280	93,9	93,3	128,0



+31 (0)888-POWERS (769 377)

Powers cannot be responsible for any errors and reserves the right to make technical and range modifications without notice. No liability is accepted for printing errors and omissions. Powers terms and conditions apply. Copyright © 2011 Powers Fasteners Europe. All rights reserved.

Powers